



## Ss. Cyril & Methodius Parish Center



125 Half Hollow Road  
Deer Park, New York



# 125 Half Hollow Road

Deer Park, New York - Ss. Cyril & Methodius Parish Center

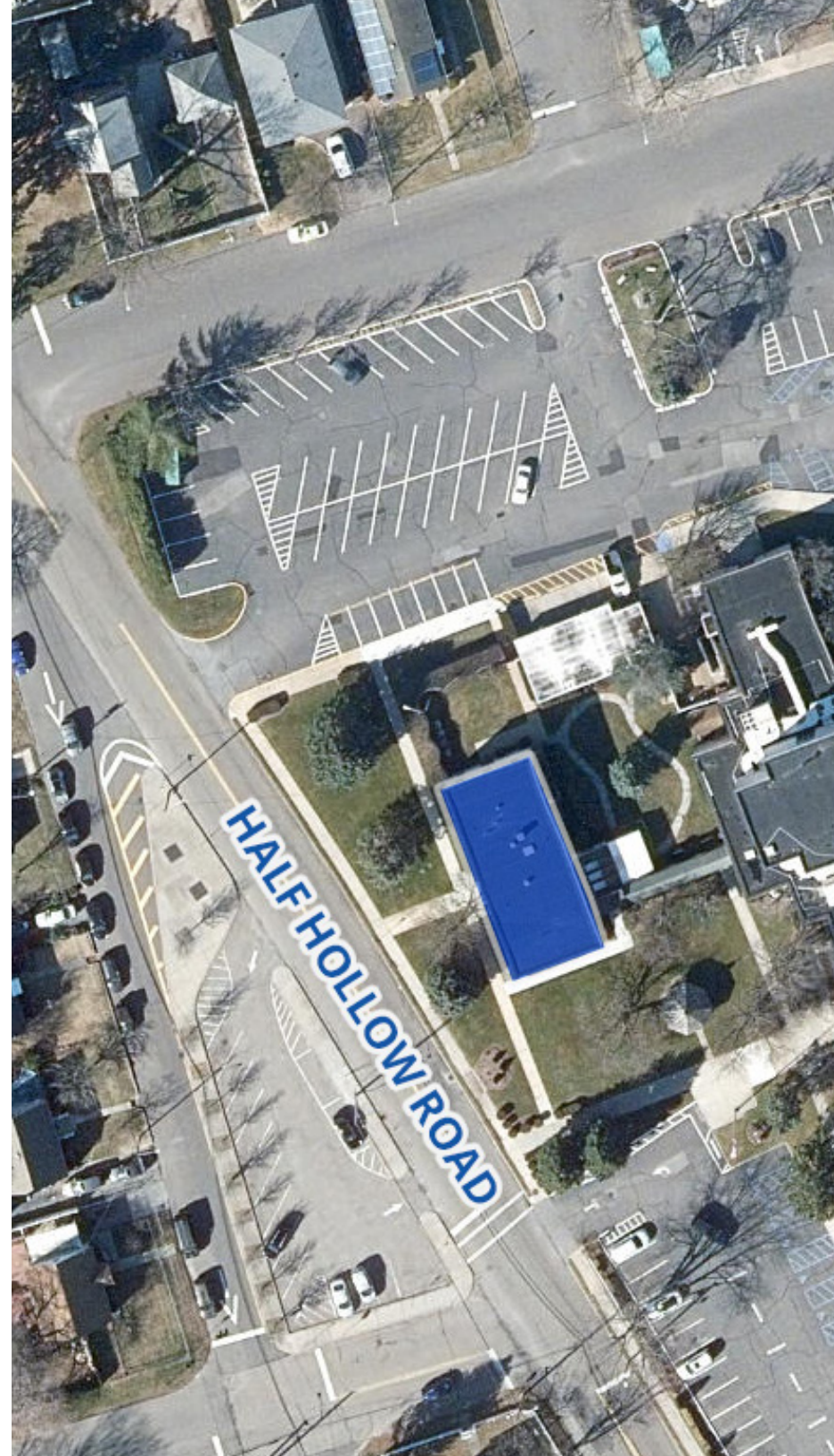
For Lease

**+/- 8,532 SF**

## Key Highlights

- Ss. Cyril Methodius Parish Center
- 3 story building + 36' x 79' basement
- Entrances on both Deer Park Avenue and Half Hollow Road
- New boiler and air conditioning.
- Close proximity to the Southern State Parkway, Long Island Avenue and the Long Island Railroad (Wyandanch & Deer Park Stations)
- Walk to S23/S29 bus transit (Deer Park & Church Street)
- Pricing + utilities and CAM

No representation is made as to the accuracy of the information furnished herein and same is submitted subject to errors, omissions, change of prices, rental, or other conditions, prior sale, lease, sublease, and/or withdrawal without notice. While every attempt is made to ensure accuracy, the floor plan(s) is for guidance only. The measurements, dimensions, specifications, and other data shown are approximate and may not be to scale. We assume no responsibility for the accuracy of the floor plan(s) or for any action taken in reliance thereon. The floor plan(s) do not create any representation, warranty or contract. All parties should consult a professional, such as an architect, to verify the information contained herein. The furnishing of this information shall not be deemed a hiring. A commission in accordance with our principal's schedule of rates and conditions will be paid to the procuring Broker who executes our or our principal's brokerage agreement, subject to a fully consummated transaction upon terms and conditions acceptable to our principal. Colliers International LI, Inc.

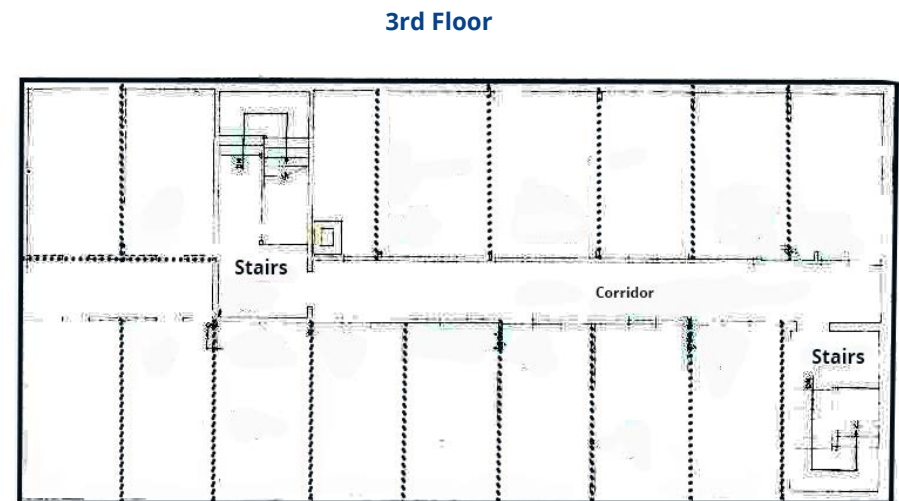
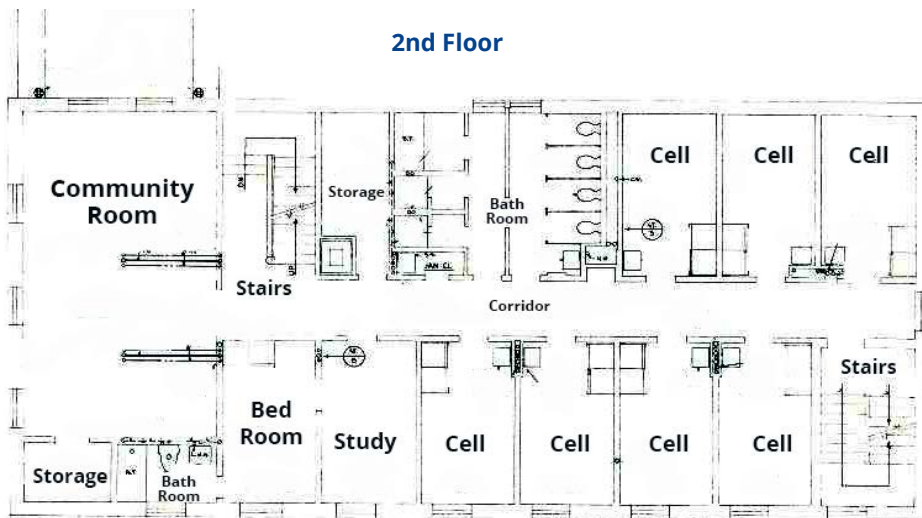
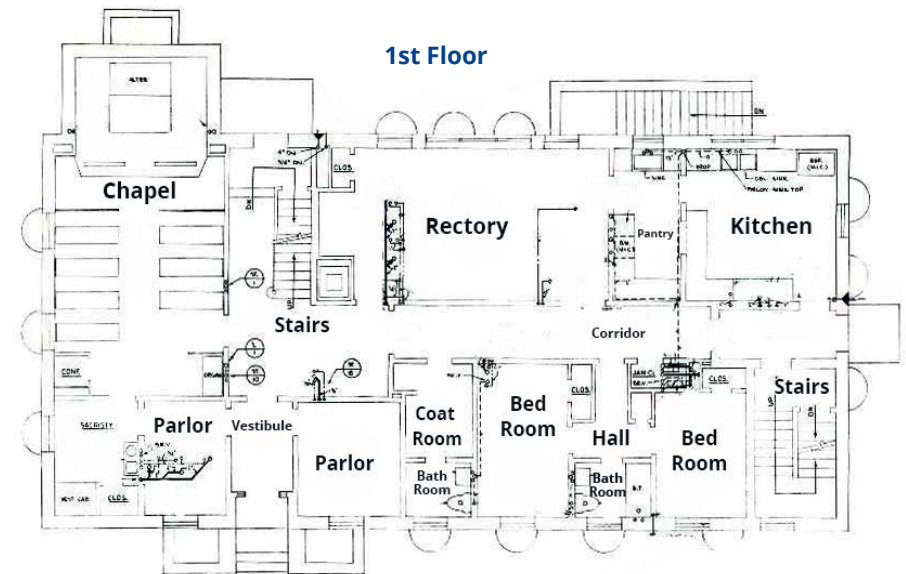
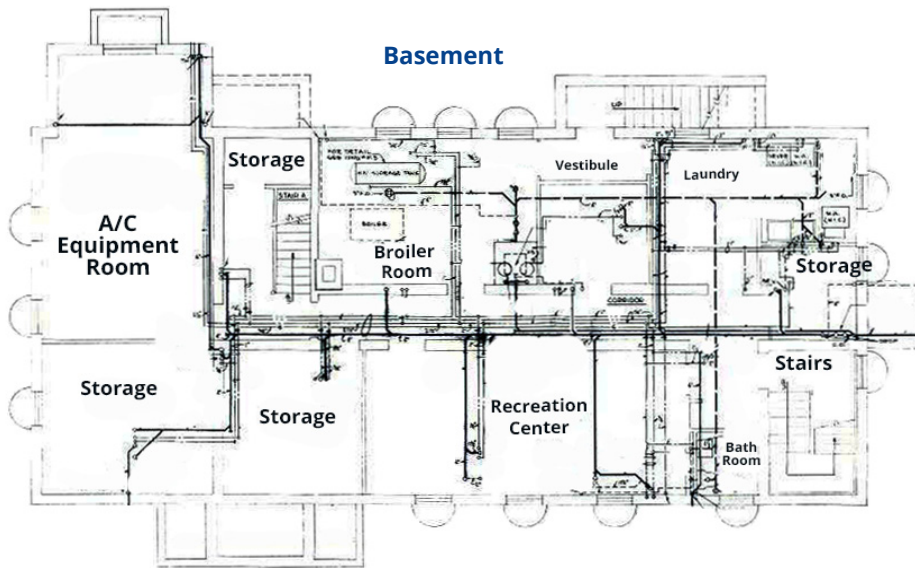




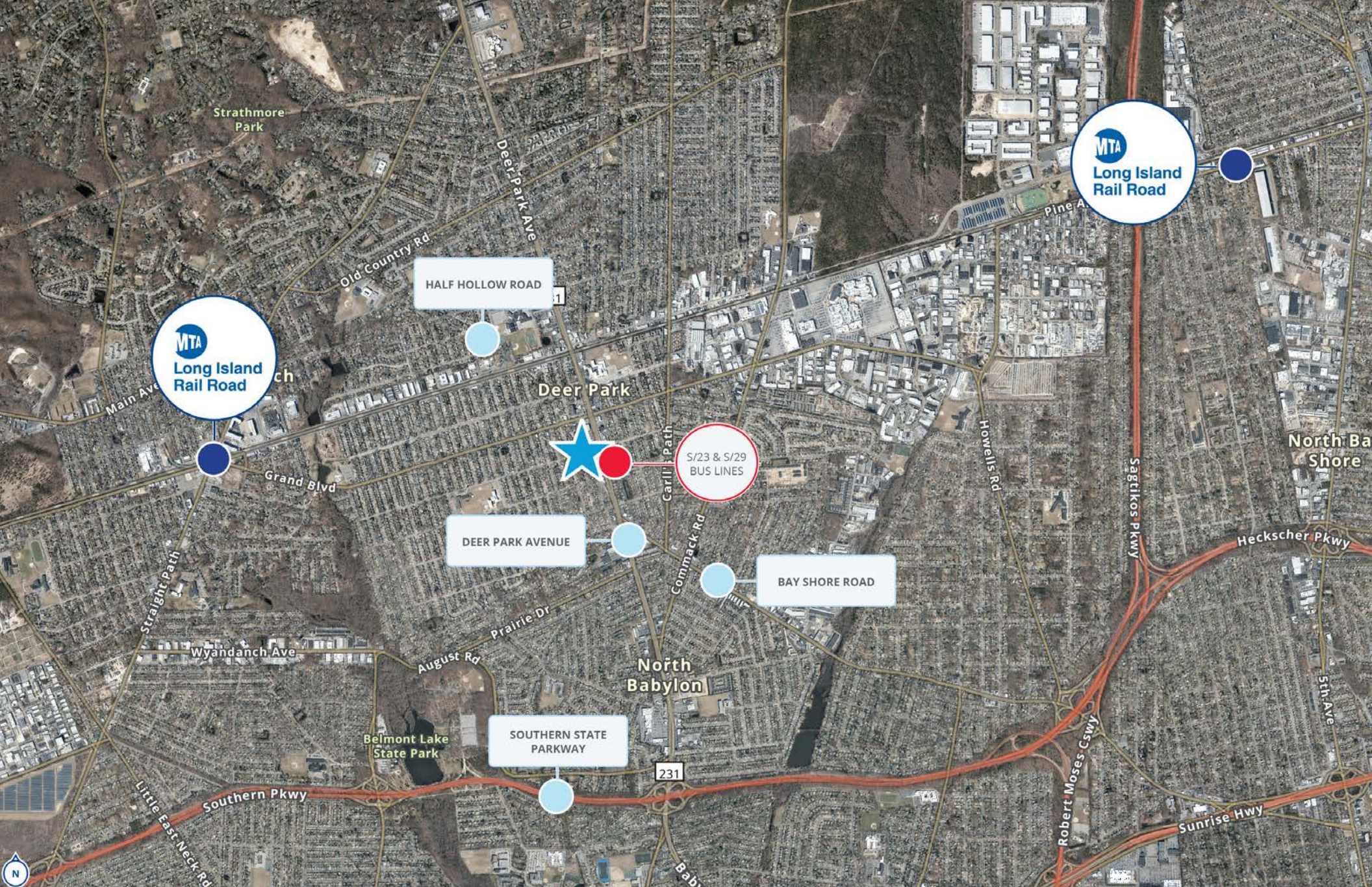




# Property Floor Plans







Gus Nuzzolese, Esq.

Executive Managing Director - Licensed Associate Broker

516 284 3456

Long Island, NY

[gus.nuzzolese@colliers.com](mailto:gus.nuzzolese@colliers.com)



Price Upon Request